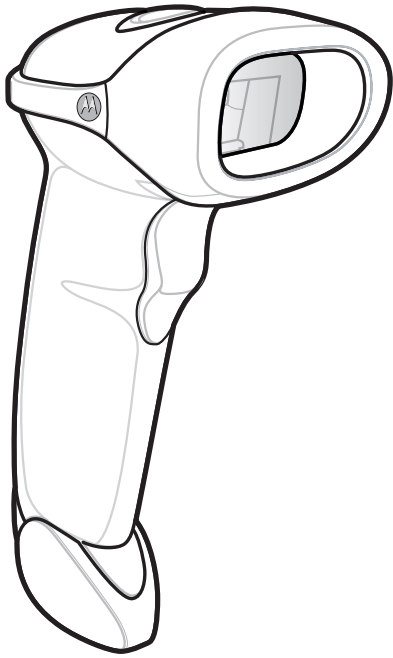


SYMBOL LS2208

Quick Start Guide

<http://www.motorola.com/ls2208>

POST IN WORK AREA



See Product Reference Guide for more information

Miscellaneous Settings

Set Defaults



SET DEFAULTS

Carriage Return/Line Feed



SCAN OPTIONS



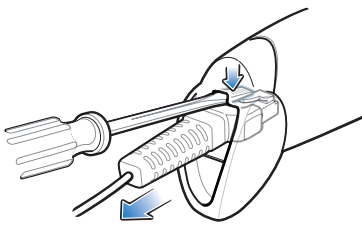
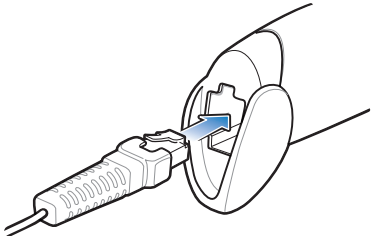
<DATA><SUFFIX>



ENTER

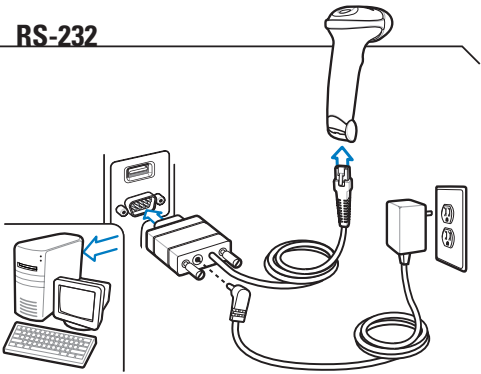
NOTE: Cables may vary depending on configuration.

Step 1 - Cord Attachment/Removal

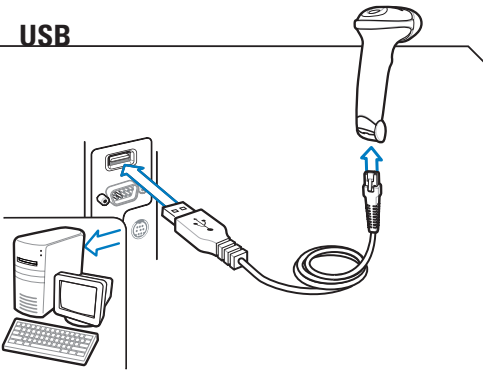


Step 2 - Connect to Host

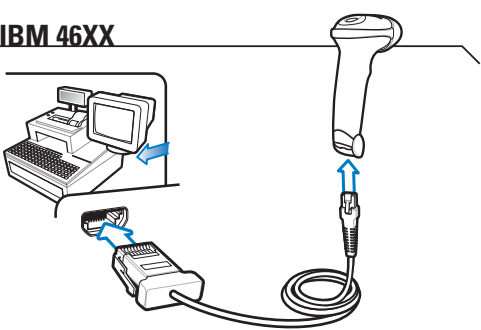
RS-232



USB



IBM 46XX



Step 3 - Scan **ONE** of the following



STANDARD RS-232



ICL RS-232



NIXDORF RS-232 MODE A



NIXDORF RS-232 MODE B



FUJITSU RS-232



OPOS/JPOS

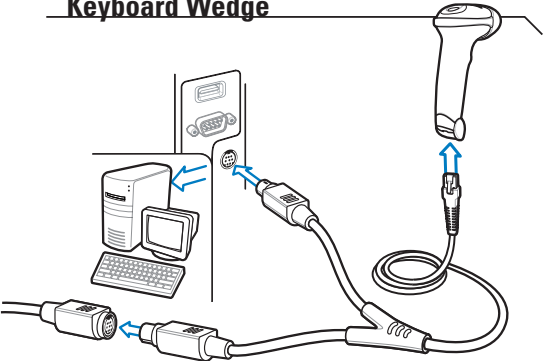


HID KEYBOARD EMULATION



IBM HAND-HELD USB

Keyboard Wedge



Step 3 - Scan the following



IBM PC/AT and IBM PC COMPATIBLE

Step 3 - Scan **ONE** of the following

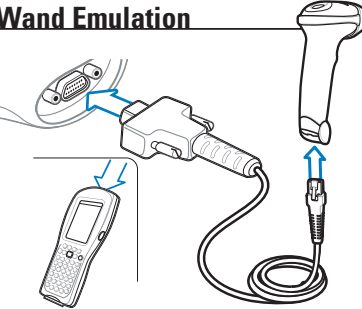


PORT 5B



PORT 9B

Wand Emulation



Step 3 - Scan **ONE** of the following



SYMBOL WAND



ENABLE CONVERT TO CODE 39



DISABLE CONVERT TO CODE 39

LED Indications

Off

Scanner is on and ready to scan, or no power to scanner

Green

Bar code is successfully decoded

Red

Transmission error

Beeper Indications

Standard Use

Low/medium/hih beep

Power up

Short medium beep

Bar code decoded

4 long low beeps

Transmission error detected, data is ignored

Parameter Menu Scanning

High/low/high/low beep

Successful parameter setting

High/low beep

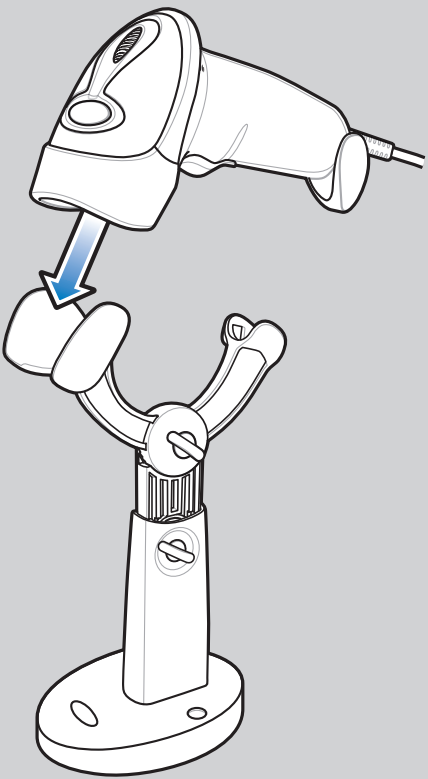
Correct programming sequence performed

Low/High beep

Incorrect programming sequence or 'Cancel' bar code scanned

Accessories

IntelliStand



Troubleshooting

Scanner not working

No power to scanner

Check system power; ensure power supply, if required, is connected

Incorrect interface cable used

Ensure that correct interface cable is used

Interface/power cables are loose

Ensure all cable connections are secure

Scanner decoding bar code, but data not transmitting to host

Scanner not programmed for correct host interface

Scan appropriate host parameter bar codes

Interface cable is loose

Ensure all cable connections are secure

Scanned data incorrectly displayed on host

Scanner not programmed for correct host interface

Scan appropriate host parameter bar codes

Scanner not decoding bar code

Scanner not programmed for bar code type

Ensure scanner is programmed to read type of bar code being scanned

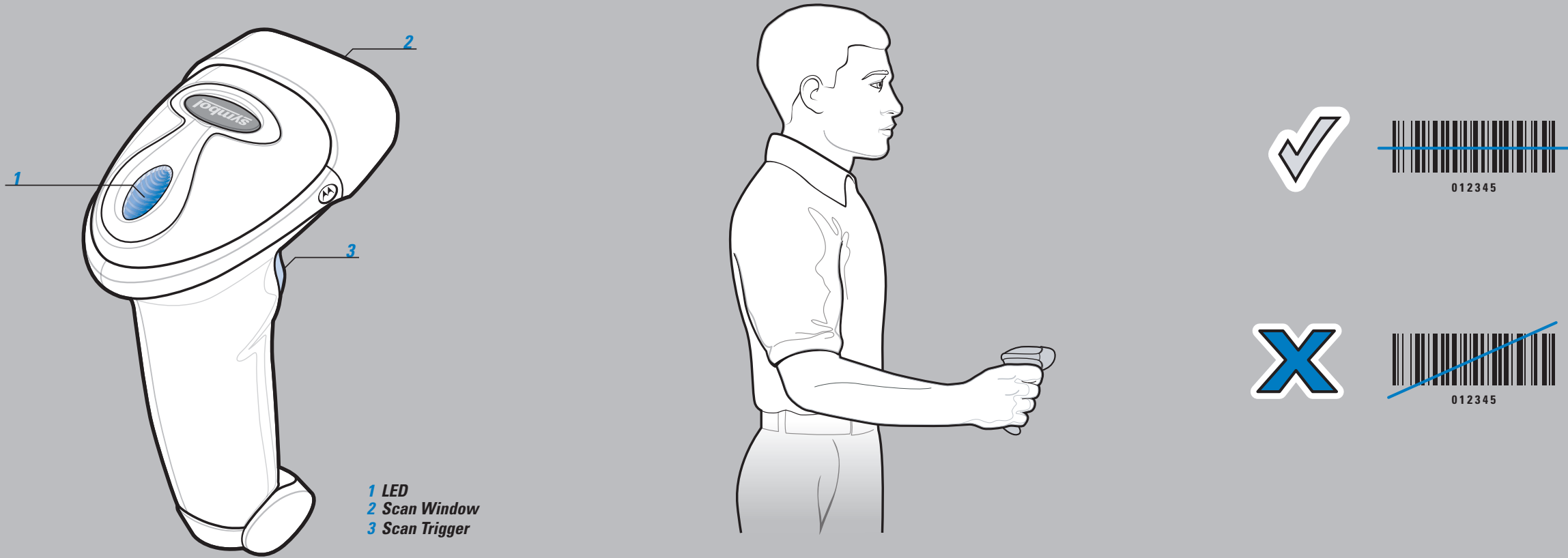
Bar code unreadable

Ensure bar code not defaced; try scanning test bar code of same bar code type

Distance between scanner and bar code incorrect

Move scanner closer to or further from bar code

OPTIMUM SCANNING POSITIONS



OPTIMUM UPRIGHT BODY POSTURE

Avoid Extreme Wrist Angles

Avoid Bending

Avoid Reaching

Ergonomic Recommendations
Caution: In order to avoid or minimize the potential risk of ergonomic injury follow the recommendations below. Consult with your local Health & Safety Manager to ensure that you are adhering to your company's safety programs to prevent employee injury.

- Reduce or eliminate repetitive motion
- Maintain a natural position
- Reduce or eliminate excessive force
- Keep objects that are used frequently within easy reach
- Perform tasks at correct heights
- Reduce or eliminate vibration
- Reduce or eliminate direct pressure
- Provide adjustable workstations
- Provide adequate clearance
- Provide a suitable working environment
- Improve work procedures.

REGULATORY INFORMATION

© **MOTOROLA, INC. 2008** All rights reserved.
Motorola reserves the right to make changes to any product to improve reliability, function, or design. Motorola does not assume any product liability arising out of, or in connection with, the application or use of any product, circuit, or application described herein. No license is granted, either expressly or by implication, estoppel, or otherwise under any patent right or patent, covering or relating to any combination, system, apparatus, machine, material, method, or process in which Motorola products might be used. An implied license exists only for equipment, circuits, and subsystems contained in Motorola products. MOTOROLA, the Stylized M Logo and Symbol and the Symbol logo are registered trademarks of Motorola, Inc. Other product names mentioned in this manual may be trademarks or registered trademarks of their respective companies and are hereby acknowledged.
Motorola, Inc. One Motorola Plaza, Holtville, N.Y. 11742-1300 • <http://www.motorola.com/enterprisemobility>

Warranty
For the complete Motorola hardware product warranty statement, go to:
<http://www.motorola.com/enterprisemobility/warranty>.

Patents
This product is covered by one or more patents. For patent information go to:
<http://www.motorola.com/enterprisemobility/patents>.

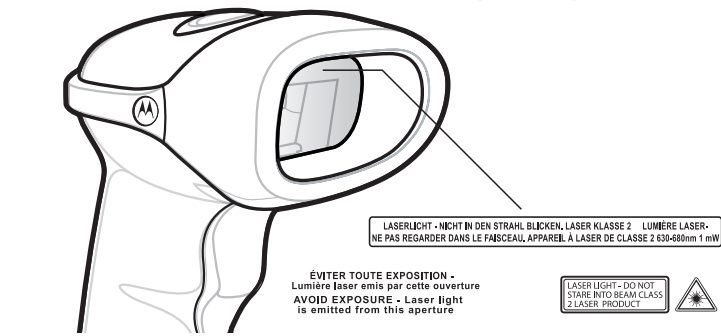
Service Information
If you have a problem using the equipment, contact your facility's Technical or Systems Support. If there is a problem with the equipment, they will contact the Motorola Enterprise Mobility Support at:
<http://www.motorola.com/enterprisemobility/contactsupport>.

Waste Electrical and Electronic Equipment (WEEE)

English: For EU Customers: All products at the end of their life must be returned to Motorola for recycling. For information on how to return product, please go to:
<http://www.motorola.com/recycling/weee>
Bulgarian: За клиентите от ЕС: След края на полезния живот всички продукти трябва да се връщат на Motorola за рециклиране. За информация за връщане на продукта, моля посетете нас адрес: <http://www.motorola.com/recycling/weee>
Czech: Pro zákazníky v EU: Všechny produkty je nutné po skončení jejich životnosti vrátit společnosti Motorola k recyklaci. Informace o způsobu vrácení produktu najdete na webové stránce: <http://www.motorola.com/recycling/weee>
Danish: Til kunder i EU: Alle produkter skal returneres til Motorola til recykling, når de er udfjelt. Læs oplysningerne om returnering af produkter på:
<http://www.motorola.com/recycling/weee>
Deutsch: Für Kunden innerhalb der EU: Alle Produkte müssen am Ende ihrer Lebensdauer zum Recycling an Motorola zurückgegeben werden. Informationen zur Rücksendung von Produkten finden Sie unter <http://www.motorola.com/recycling/weee>
Ελληνικά: Για πελάτες στην Ε.Ε.: Όλα τα προϊόντα, στο τέλος της διάρκειας ζωής τους, πρέπει να επιστρέφονται στην Motorola για ανακύκλωση. Για περισσότερες πληροφορίες, επισκεφτείτε την ιστοσελίδα μας: <http://www.motorola.com/recycling/weee>
Eesti: EL Klientidele: kõik tooted tuleb nende eluea lõppedes tagastada taaskasutamise eesmärgil Motorola'ile. Lisainformatsiooni saamiseks toote tagastamise kohta külastage palun aadressi: <http://www.motorola.com/recycling/weee>
Español: Para clientes en la Unión Europea: todos los productos deberán entregarse a Motorola al final de su ciclo de vida para que sean reciclados. Si desea más información sobre cómo devolver un producto, visite: <http://www.motorola.com/recycling/weee>
Fransais: Clients de l'Union Européenne : Tous les produits en fin de cycle de vie doivent être retournés à Motorola pour recyclage. Pour de plus amples informations sur le retour de produits, consultez : <http://www.motorola.com/recycling/weee>
Italiano: per i clienti dell'UE: tutti i prodotti che sono giunti al termine del rispettivo ciclo di vita devono essere restituiti a Motorola al fine di consentirne il riciclaggio. Per informazioni sulla modalità di restituzione, visitare il seguente sito Web: <http://www.motorola.com/recycling/weee>

Lithuanian: ES klientams: visi produktai po to laiko, kai pasibaigia jų naudos laikas, turi būti grąžinti į kompaniją „Motorola“. Daugiau informacijos, kaip grąžinti gaminius, rasite: <http://www.motorola.com/recycling/weee>
Magyar: Az EU-ban vásárlóknak: Minden termékem termékét a Motorola vállalatához kell eljuttatni újrahasznosítás céljából. A termék visszajuttatásának módjával kapcsolatos tudnivalókat látogasson el a <http://www.motorola.com/recycling/weee> weboldalra.
Malti: Għal klijenti fl-EU: Iż-żenut kollha li jkunu vassu, kien għall tagħna li jkunu tagħna, indur jgħu minnna għand Motorola għar-rikiklab. Għal aktar tagħni dwar kif għandek tintorna l-prodott, jekk jogħġbok zur: <http://www.motorola.com/recycling/weee>
Nederlands: Voor klanten in de EU: alle producten dienen aan het einde van hun levensduur naar Motorola te worden teruggezonden voor recycling. Raadpleeg <http://www.motorola.com/recycling/weee> voor meer informatie over het teruggeven van producten.
Polski: Klienci z obszaru Unii Europejskiej: Produkty wycofane z eksploatacji należy zwrócić do firmy Motorola w celu ich użycia. Informacje na temat zwrotu produktów znajdują się na stronie internetowej: <http://www.motorola.com/recycling/weee>
Portuguese: Para clientes da UE: todos os produtos no fim de vida devem ser devolvidos à Motorola para reciclagem. Para obter informações sobre como devolver o produto, visite: <http://www.motorola.com/recycling/weee>
Română: Pentru clienții din UE: Toate produsele, la sfârșitul duratei lor de funcționare, trebuie returnate la Motorola pentru reciclare. Pentru informații despre returnarea produsului, accesați: <http://www.motorola.com/recycling/weee>
Slovenian: Pre zakaznikov z krajini EU: Vseky výrobky musia byt po uplynutí doby ich životnosti vrátené spoločnosti Motorola na recykláciu. Sčítané informácie o vrátení výrobkov nájdete na: <http://www.motorola.com/recycling/weee>
Slovak: Za kupcov v EU: vsi zariadenia sa moraju po potoku življenjske dobe vrniti podjetju Motorola za reciklajo. Za informacije o vračilu izdelka obiščite: <http://www.motorola.com/recycling/weee>
Swedish: För kunder inom EU: Alla produkter som uppnått sin livslängd måste returneras till Motorola för återvinning. Information om hur du returnerar produkten finns på <http://www.motorola.com/recycling/weee>

Laser Labels	
	In accordance with Clause 5, IEC 825 and EN60825, the following information is provided to the user:
ENGLISH CLASS 1 CLASS 2	CLASS 1 LASER PRODUCT LASER LIGHT DO NOT STARE INTO BEAM CLASS 2 LASER PRODUCT
DANISH / DANSK KLASSE 1 KLASSE 2	KLASSE 1 LASERPRODUKT LASERLYS SE IKKE IND I STRÅLEN KLASSE 2 LASERPRODUKT
DUTCH / NEDERLANDS KLASSE 1 KLASSE 2	KLASSE-1 LASERPRODUKT LASERLICHT NIET IN STRAAL STAREN KLASSE-2 LASERPRODUKT
FINNISH / SUOMI LUOKKA 1 LUOKKA 2	LUOKKA 1 LASERTUOTE LASERVALO ÄLÄ TUIJOTA SÄDETTÄ LUOKKA 2 LASERTUOTE
FRENCH / FRANÇAIS CLASSE 1 CLASSE 2	PRODUIT LASER DE CLASSE 1 LUMIÈRE LASER NE PAS REGARDER LE RAYON DIRECT PRODUIT LASER DE CLASSE 2
GERMAN / DEUTSCH KLASSE 1 KLASSE 2	LASERPRODUKT DER KLASSE 1 LASERSTRAHLEN NICHT DIREKT IN DEN LASERSTRAHL SCHAUEN LASERPRODUKT DER KLASSE 2
JAPANESE / 日本語 第1種 第2種	第1種レーザー製品 レーザー光線 光線を見つめないでください 2種 レーザー製品
KOREAN / 한국어 1등급 2등급	1등급 레이저 제품 레이저 광선 이 광선을 주시하지 마십시오. 2등급 레이저 광선
HEBREW 1 רמה 2 רמה	מוצר לייזר רמה 1 אור לייזר רמה 2 אל תבטו אל תוך הווריד מוצר לייזר רמה 2
ITALIAN / ITALIANO CLASSE 1 CLASSE 2	PRODOTTO AL LASER DI CLASSE 1 LUCE LASER NON FISSARE IL RAGGIO/PRODOTTO AL LASER DI CLASSE 2
NORWEGIAN / NORSK KLASSE 1 KLASSE 2	LASERPRODUKT, KLASSE 1 LASERLYS IKKE STIRR INN ILYSSTRÅLEN LASERPRODUKT, KLASSE 2
PORTUGUESE / PORTUGUÊS CLASSE 1 CLASSE 2	PRODUTO LASER DA CLASSE 1 LUZ DE LASER NÃO FIXAR O RAO/LUMINOSO PRODUTO LASER DA CLASSE 2
SPANISH / ESPAÑOL CLASE 1 CLASE 2	PRODUCTO LASER DE LA CLASE 1 LUZ LASER NO MIRE FIJAMENTE EL HAZ PRODUCTO LASER DE LA CLASE 2
SWEDISH / SVENSKA KLASS 1 KLASS 2	LASERPRODUKT KLAS 1 LASERLJUS STIRRA INTE MOT STRÅLEN LASERPRODUKT KLAS 2
CHINESE / 简体中文 1类 2类	1类激光产品 激光切勿注视光束 2类激光产品



<http://www.motorola.com/ls2208>

MOTOROLA and the Stylized M Logo and Symbol and the Symbol logo are registered in the U.S. Patent and Trademark Office. All other product or service names are the property of their respective owners. © Motorola, Inc. 2008

Regulatory Information

Symbol Technologies, Inc., the Enterprise Mobility business of Motorola, Inc. ("Motorola"). All Symbol devices are designed to be compliant with rules and regulations in locations they are sold and will be labeled as required. Any changes or modifications to Symbol Technologies equipment, not expressly approved by Symbol Technologies, could void the user's authority to operate the equipment.



Laser Devices

Symbol products using lasers complies with 21CFR1040.10 and 1040.11, EN60825-1:1994+ A1:2002 +A2:2001 and IEC60825-1:1993+A1:1997+A2:2001.

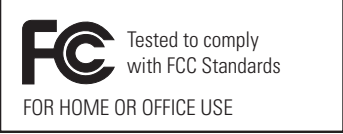
The laser classification is marked on one of the labels on the product.

Class 1 laser devices are not considered to be hazardous when used for their intended purpose. The following statement is required to comply with US and international regulations:

Caution: Use of controls, adjustments or performance of procedures other than those specified herein may result in hazardous laser light exposure.

Class 2 laser scanners use a low power, visible light diode. As with any very bright light source, such as the sun, the user should avoid staring directly into the light beam. Momentary exposure to a Class 2 laser is not known to be harmful.

Radio Frequency Interference Requirements



Note: This equipment has been tested and found to comply with the limits for a Class B digital device pursuant to Part15 of the FCC rules. These limits are designed to provide reasonable protection against harmful interference in a residential installation. This equipment generates uses and can radiate radio frequency energy and, if not installed

and used in accordance with the instruction manual, may cause harmful interference to radio communications. However there is no guarantee that interference will not occur in a particular installation. If this equipment does cause harmful interference to radio or television reception, which can be determined by turning the equipment off and on, the user is encouraged to try to correct the interference by one or more of the following measures:

- Reorient or relocate the receiving antenna
- Increase the separation between the equipment and receiver
- Connect the equipment into an outlet on a circuit different from that to which the receiver is connected
- Consult the dealer or an experienced radio/TV technician for help.

Radio Frequency Interference Requirements – Canada

This Class B digital apparatus complies with Canadian ICES-003. Cet appareil numérique de la classe B est conforme à la norme NMB-003 du Canada.

Marking and European Economic Area (EEA)



Statement of Compliance

Symbol Technologies, Inc., hereby declares that this device is in compliance with all the applicable Directives, 89/336/EEC, 73/23/EEC. A Declaration of Conformity may be obtained from <http://www.motorola.com/enterprisemobility/doc>

Japan (VCCI) - Voluntary Control Council for Interference

この装置は、情報処理装置等電波障害自主規制協議会（VCCI）の基準に基づくクラス B 情報技術装置です。この装置は、家庭環境で使用することを目的としていますが、この装置がラジオやテレビジョン受信機に近接して使用されると、受信障害を引き起こすことがあります。取扱説明書に従って正しい取り扱いをして下さい。

This is a Class B product based on the standard of the Voluntary Control Council for Interference from Information Technology Equipment (VCCI). If this is used near a radio or television receiver in a domestic environment, it may cause radio interference. Install and use the equipment according to the instruction manual.

SYMBOL LS2208

Recommended Usage Guide